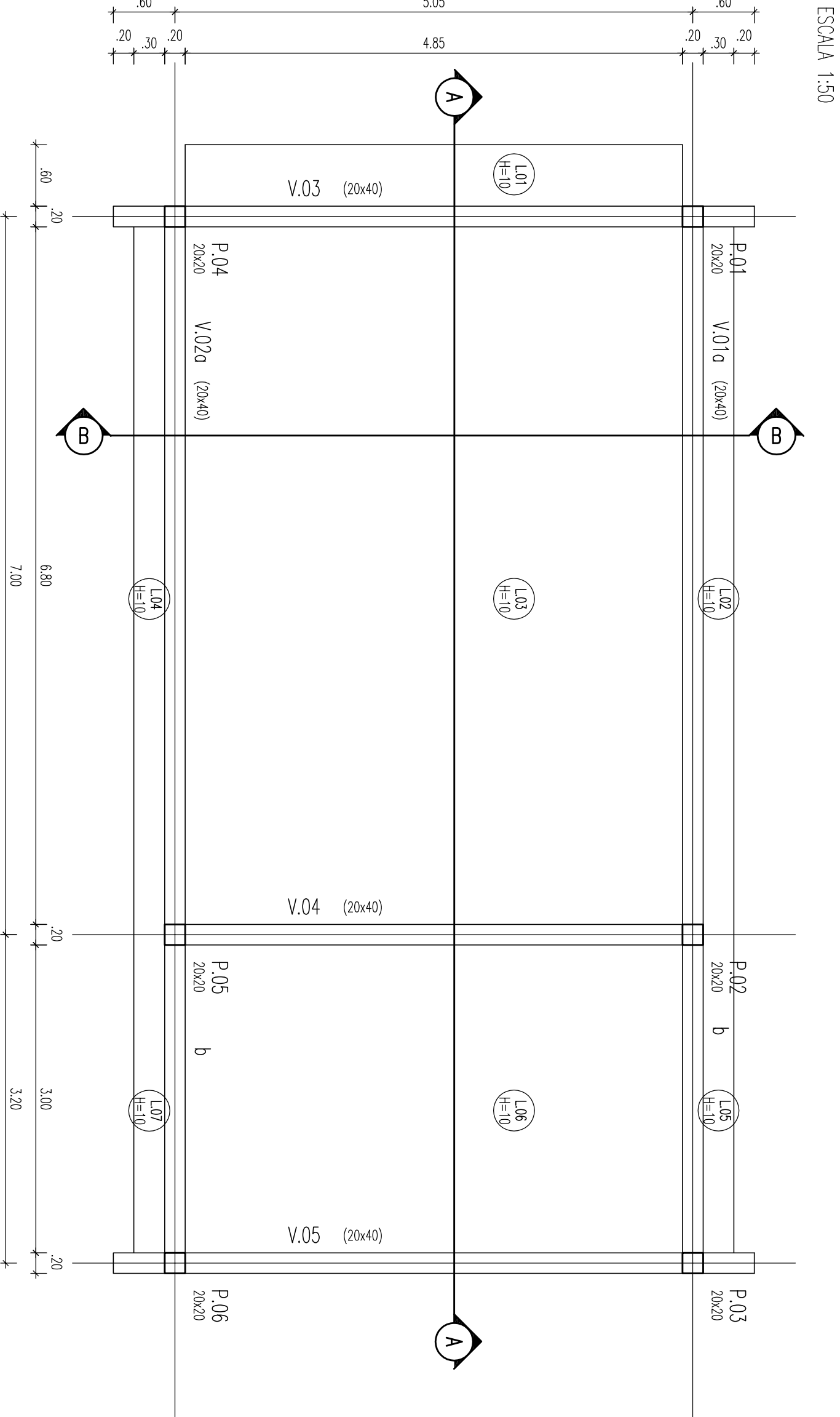
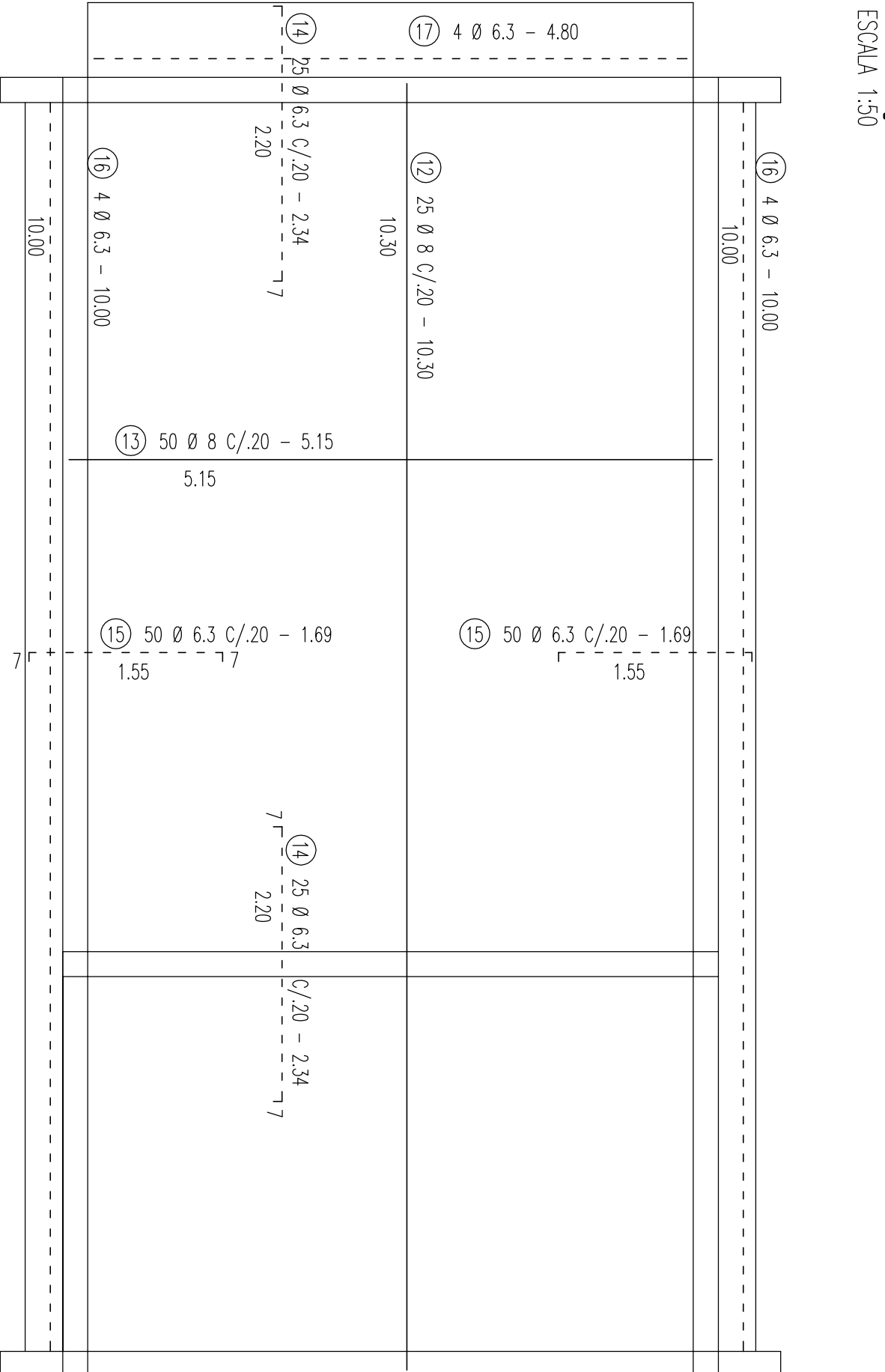


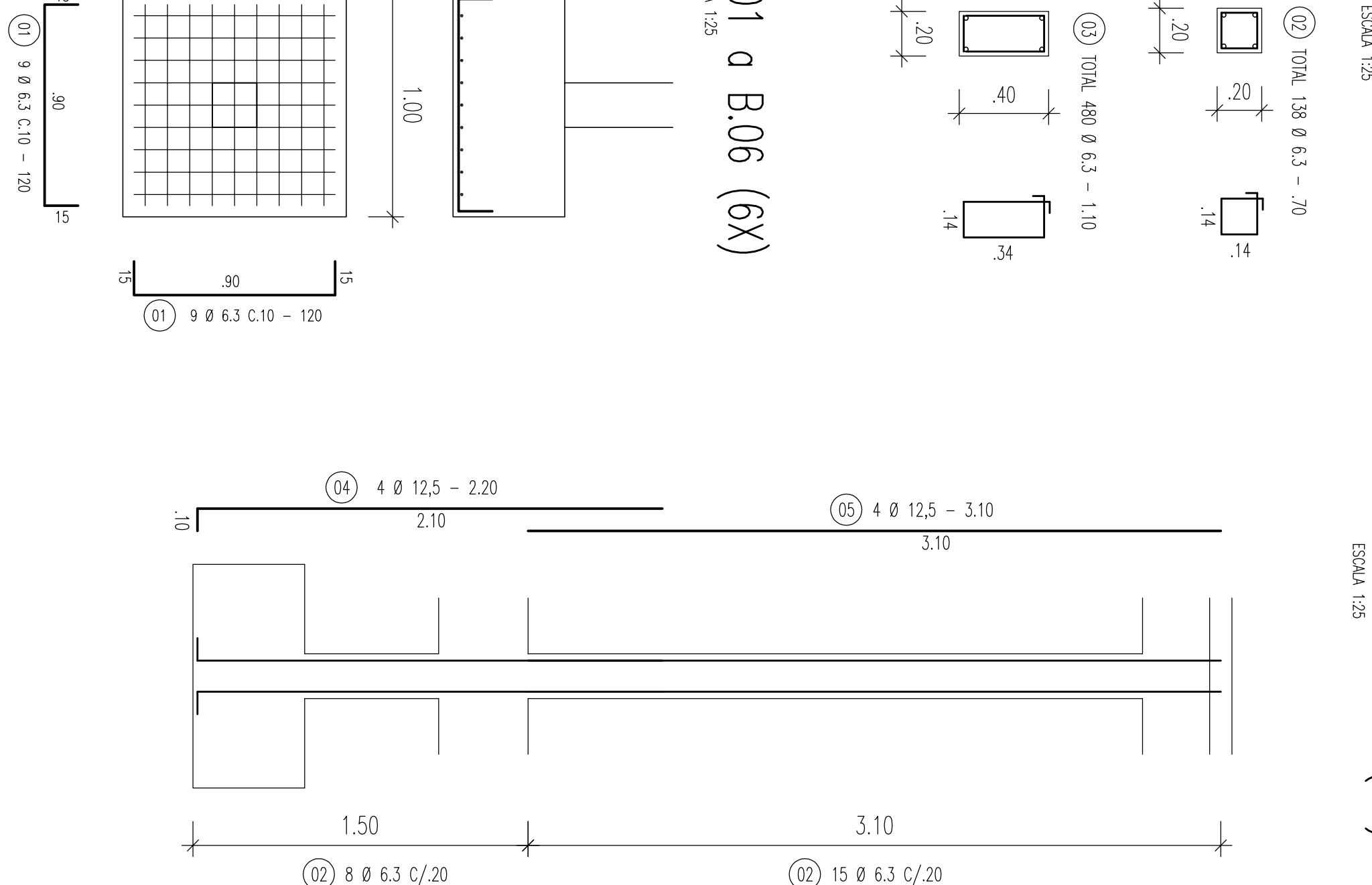
FORMA DA COBERTURA



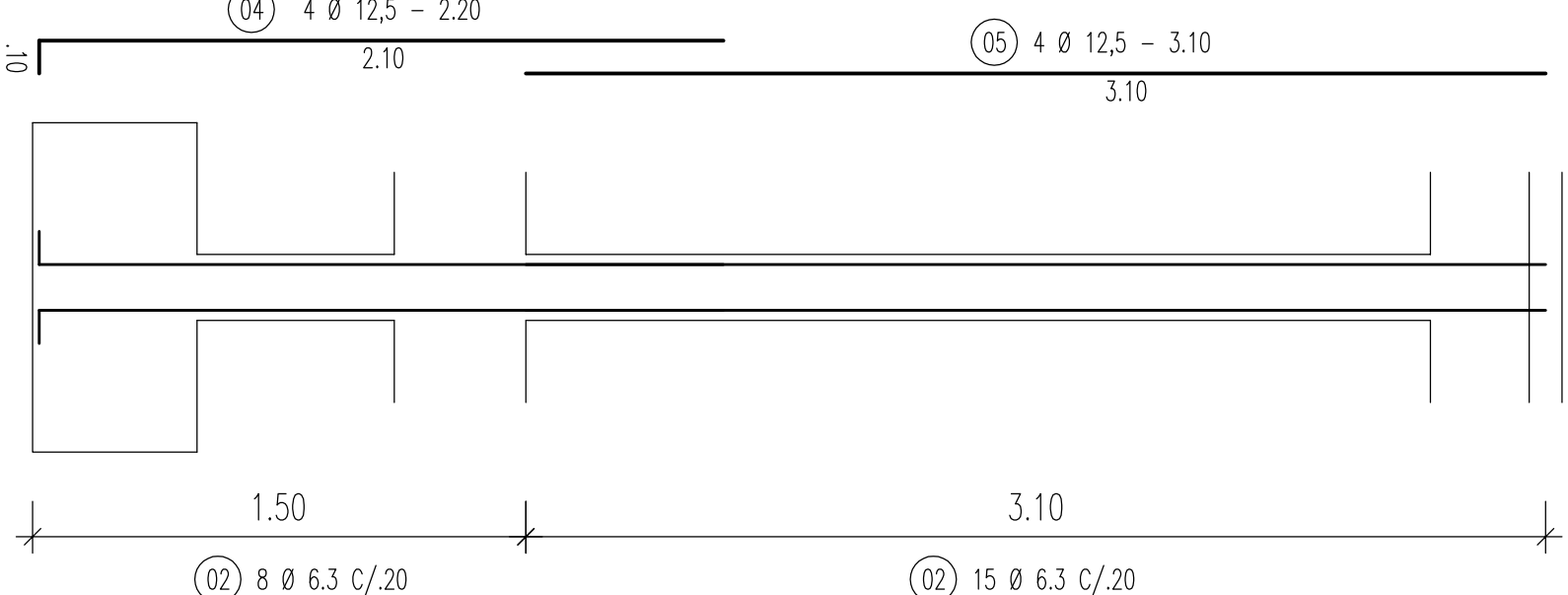
ARMADURA DA LAJE



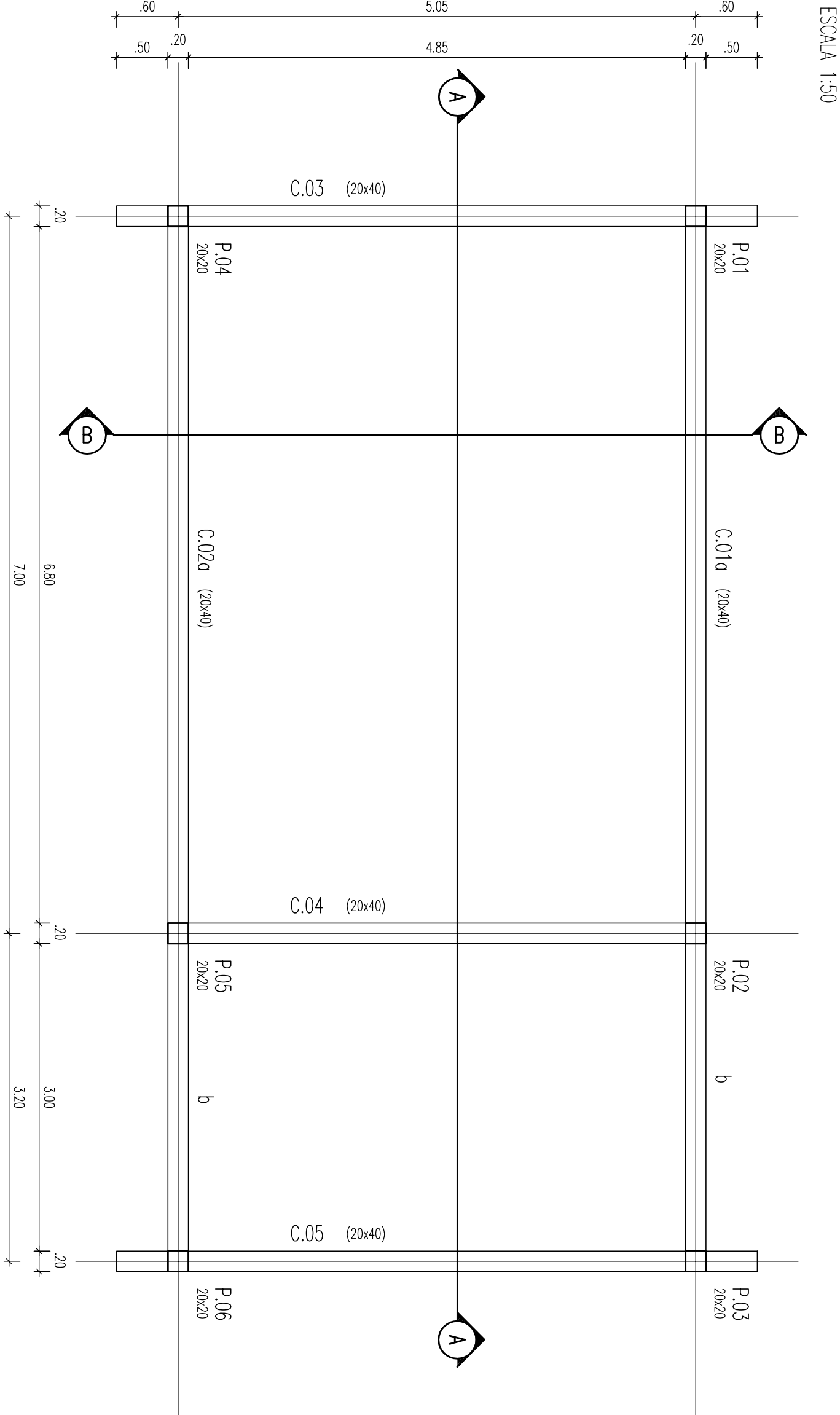
ESTRIBOS



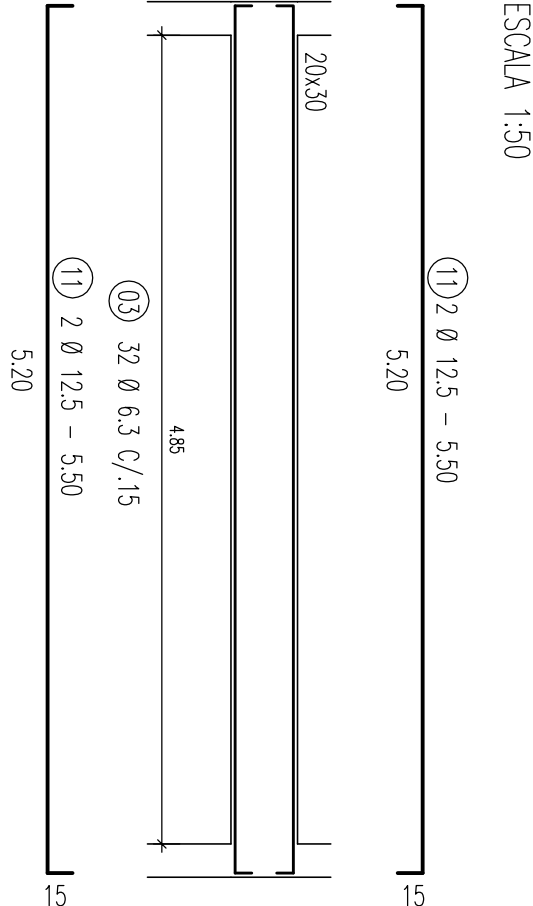
P.01 a P.06 (6x)



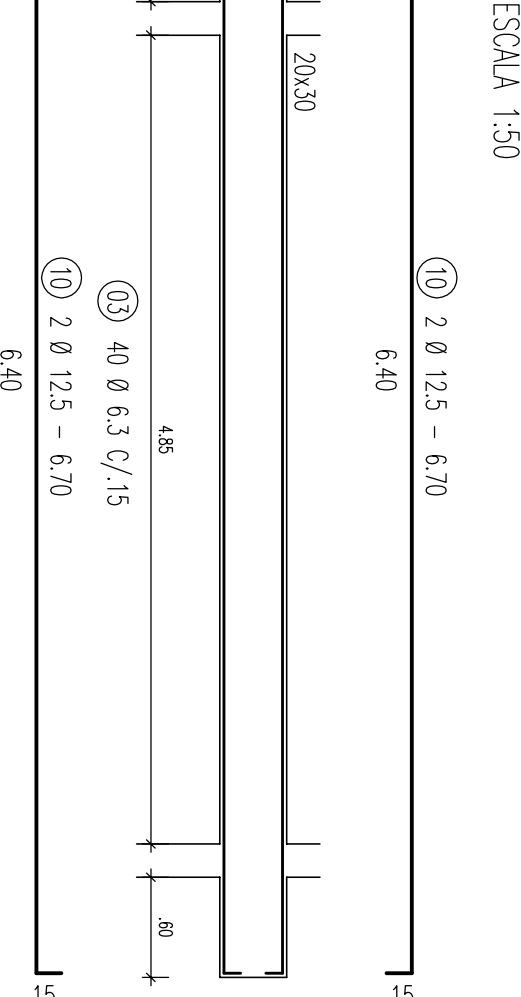
FORMA DA FUNDAÇÃO



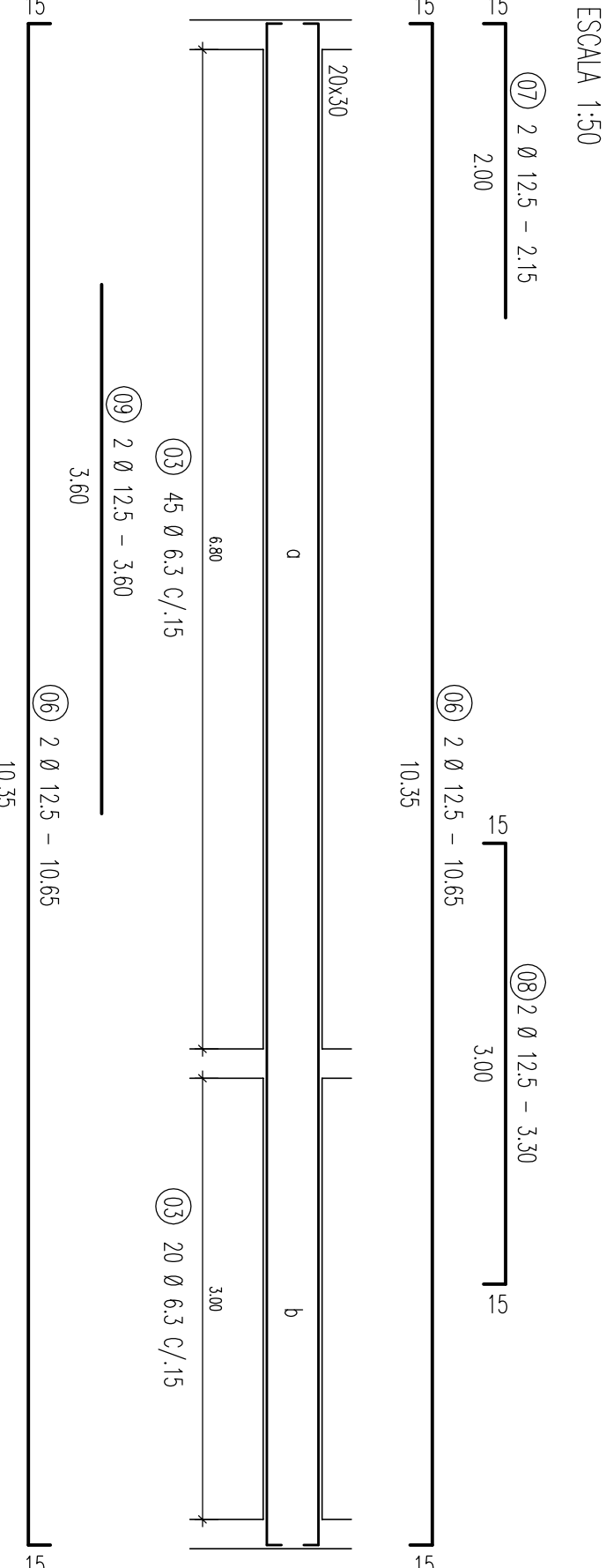
C.04 = V.04 (2x)



C.03=C.05 = V.03=4.05 (4x)



C.01=C.02 = V.01=V.02 (4x)



LOCAÇÃO

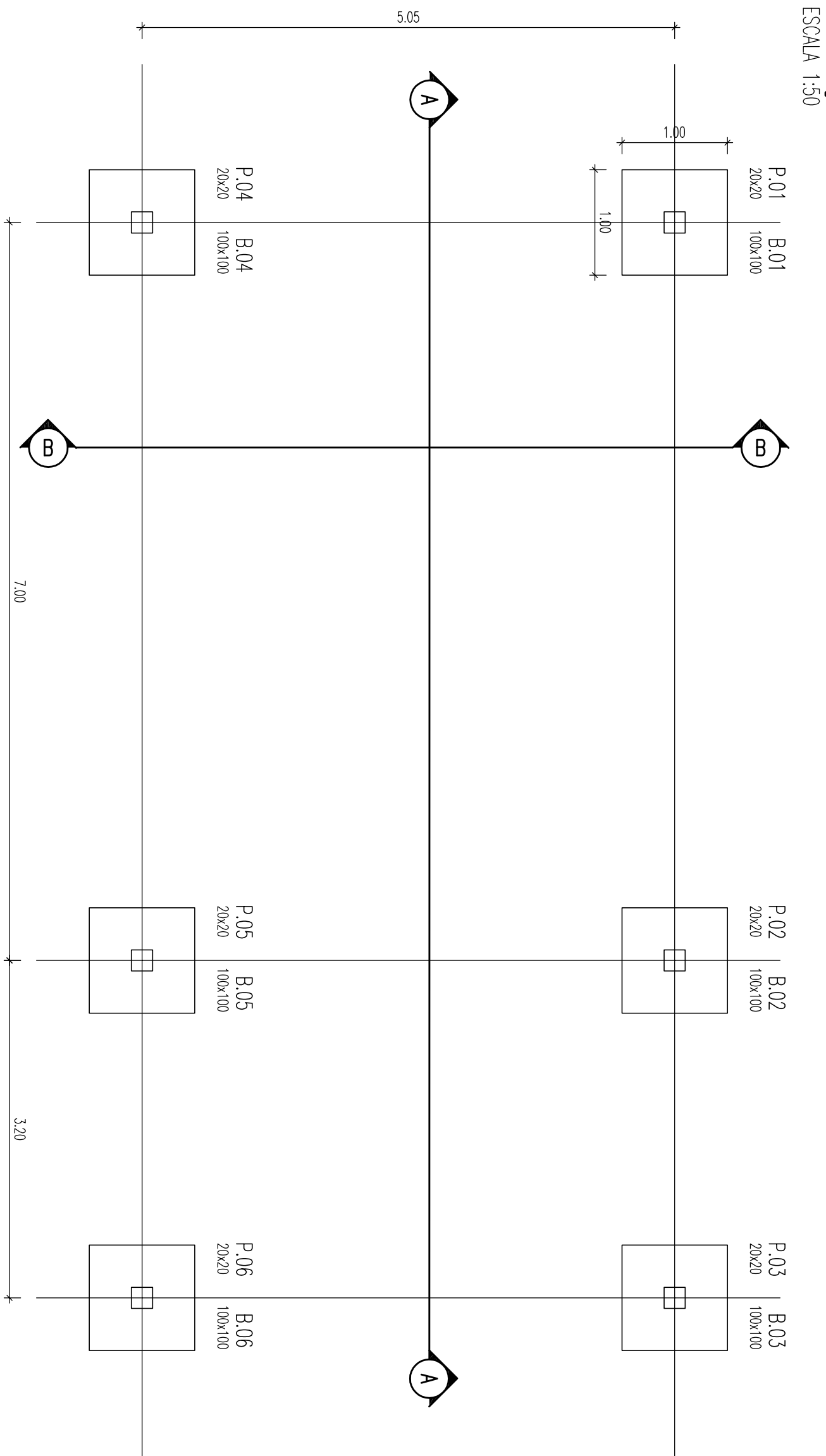


TABELA DE FERROS

Posi	Dimens	Quant	Compr	Unid	Compr	Unid
01	6,3	108	1,20	128,60		
02	6,3	138	0,70	96,60		
03	6,3	489	1,10	538,00		
04	12,5	24	2,20	52,80		
05	12,5	24	2,20	52,80		
06	12,5	16	10,65	170,40		
07	12,5	8	2,15	17,20		
08	12,5	8	3,30	26,40		
09	12,5	8	3,60	28,80		
10	12,5	16	6,10	101,20		
11	12,5	25	10,30	257,50		
12	6,0	50	5,15	257,50		
13	6,0	50	2,34	117,00		
14	6,3	100	1,69	169,00		
15	6,3	8	10,00	80,00		
16	6,3	4	4,00	16,00		
17	6,3	4	4,00	16,00		

RESUMO

Dimens	Compr (m)	Peso (kg)
6,3	113,40	284,65
6,3	51,90	128,60
10,0	51,90	128,60
12,5	521,20	500,35
16,0	0	0
20,0	0	0

CONCRETO 6x = 25,0 MPa